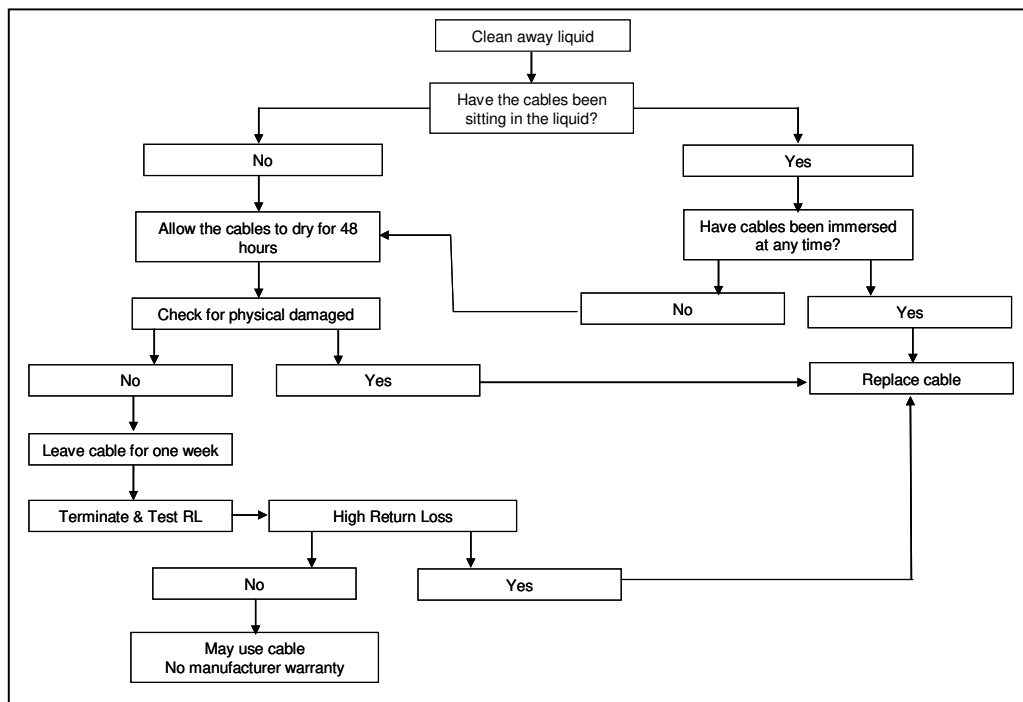


Cables & Liquids

Cables supplied by most manufacturers are intended for use in indoor applications only, unless specifically designed external grade cables are being used.

The materials used for sheathing indoor cables are typically susceptible to the ingress of liquids. Water or any liquid damaged to cabling is determined by some degree on the type of situation of the damage. It is therefore advisable to follow the general flowchart below:



It is important that the cable is checked for physical damage, checks should be made to ensure that no changes have occurred in the physical dimensions of the cable.

If any moisture, water or liquid has penetrated the cable sheath the copper cable will start to corrode. This corrosion will increase the Return Loss (RL) of the cable and have a detrimentally affect the electrical performance of the cable. The cable will not recover from this stage.

Most manufacturers will not issue any warranty on internal grade communication cables that come into water or liquids and require that these cables be replaced.

Water or liquid damaged will result in the copper communication cable not being able to deliver the required data rate and necessary band width.